

---

# IP Camera Phone View Guide

😊 Install APP    😊 Connect Network    😊 Add and View Camera

## 😊 Install APP

Download Phone Client --- *AiC* by QR scan:



iPhone



Android



The icon:

### iPhone

Search and install *AiC* in the **APP Store**.

### Android phone

In the Android Market Search and install *AiC* in the **Google Play**.

**PS:** 1.Maybe the UI of *AiC* in your phone is a little different from the example below, but the operation is nearly the same with it. Please set the WIFI with diagram below.

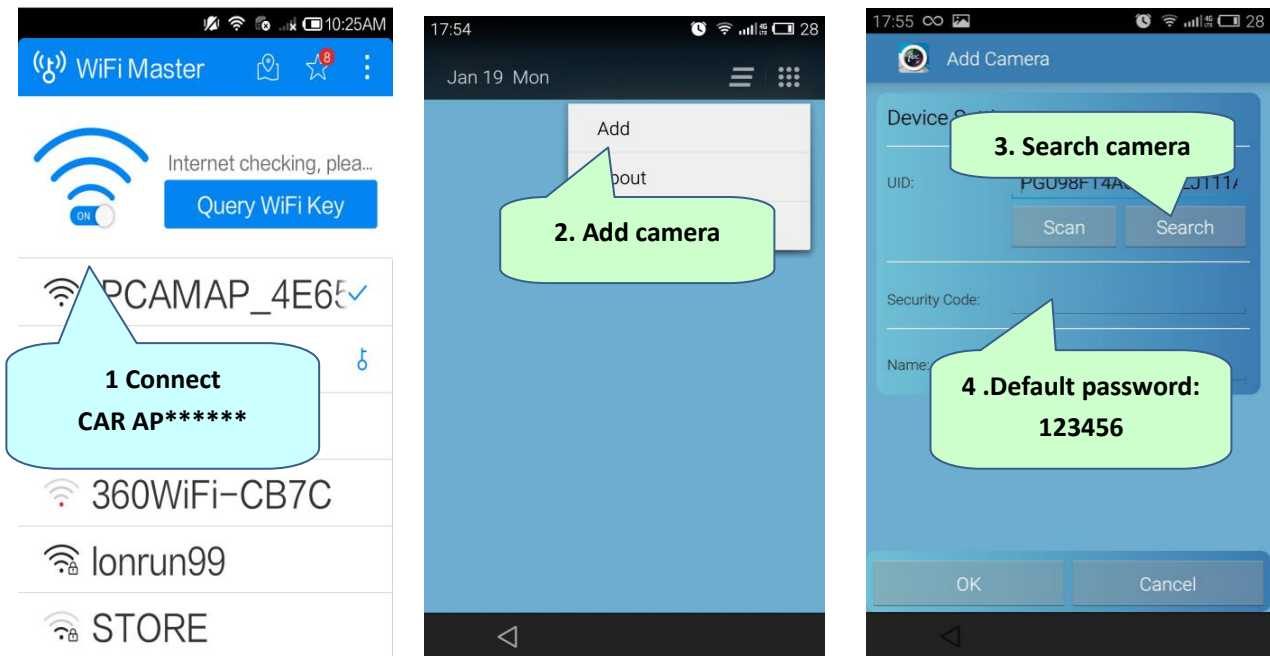


## Connect Network

### Way 1: Set WIFI by AP mode

Power on the camera for the first time, then will enter in AP Mode, and SSID: CAR AP-\*\*\*\*\*, without password, connect CAR AP-\*\*\*\*\* by your phone.


Open **AiC**, set WIFI with Installation diagram.

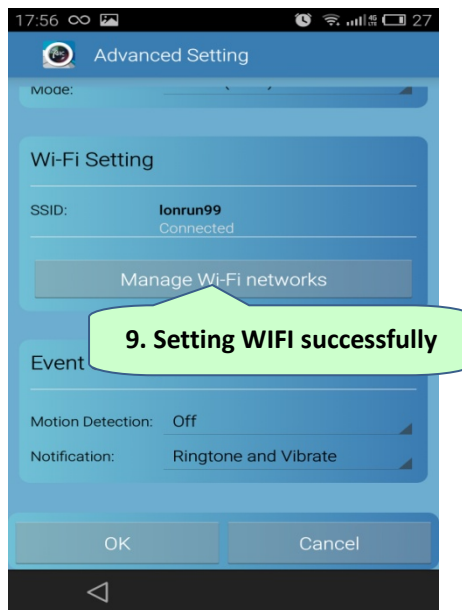
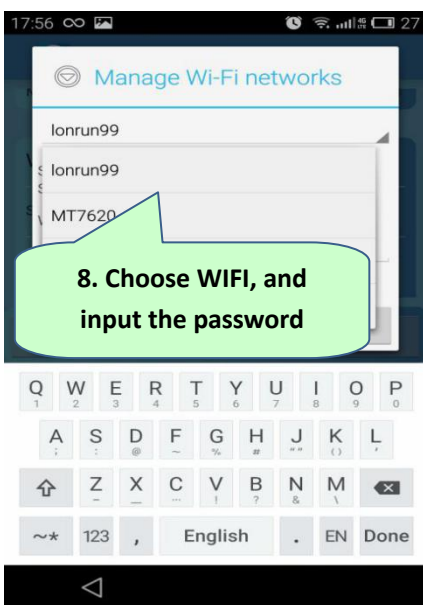
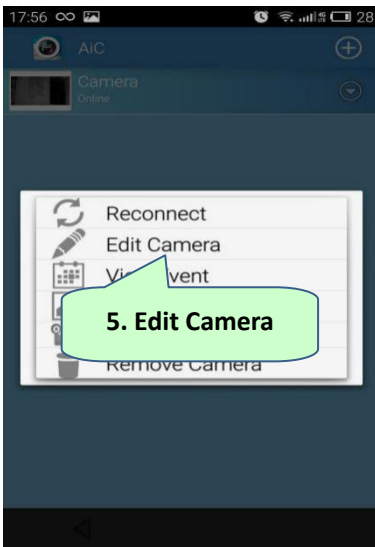


PS:

3. You can also scan the QR under the camera.

### Note:

After adding camera successfully, please click this icon . And set the WIFI as following :



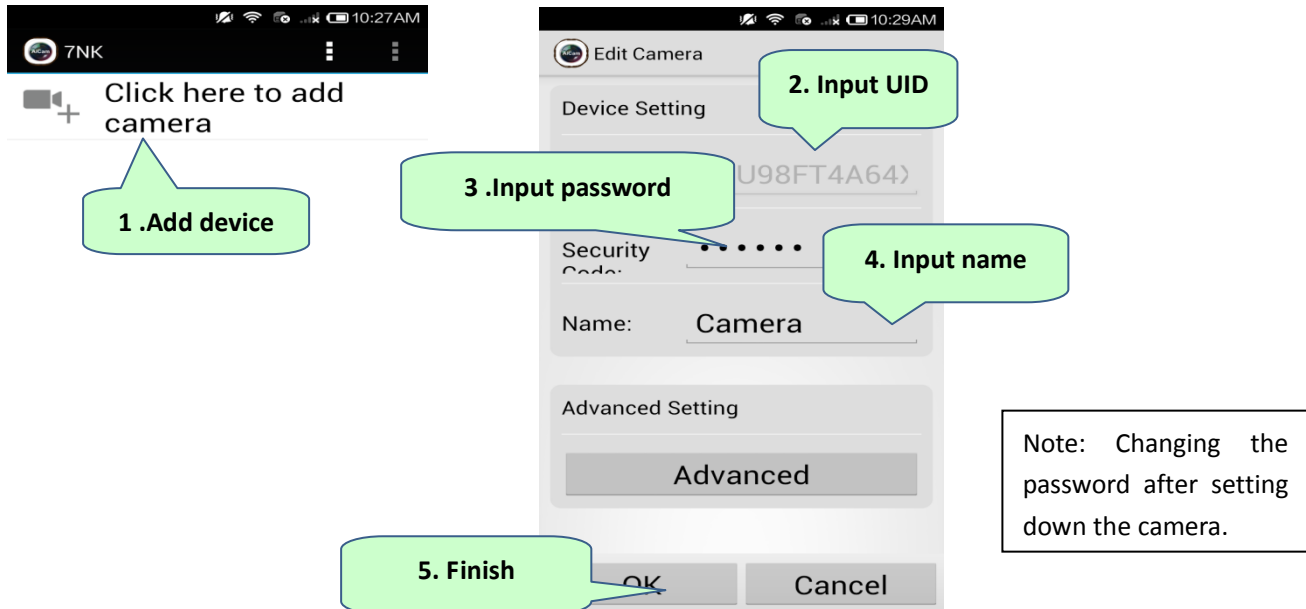
**Note:**

After setting WIFI successfully, the camera will be automatically connected to the WIFI chosen with the warning tone.

## 😊 Add and view IP camera

Open the **AiC** , input UID (by Scan or Search or Manual input)

And input Password (Default Password: 123456).



Click the device, start Real-time viewing, slide the screen to control.

Click  to open Menu.

